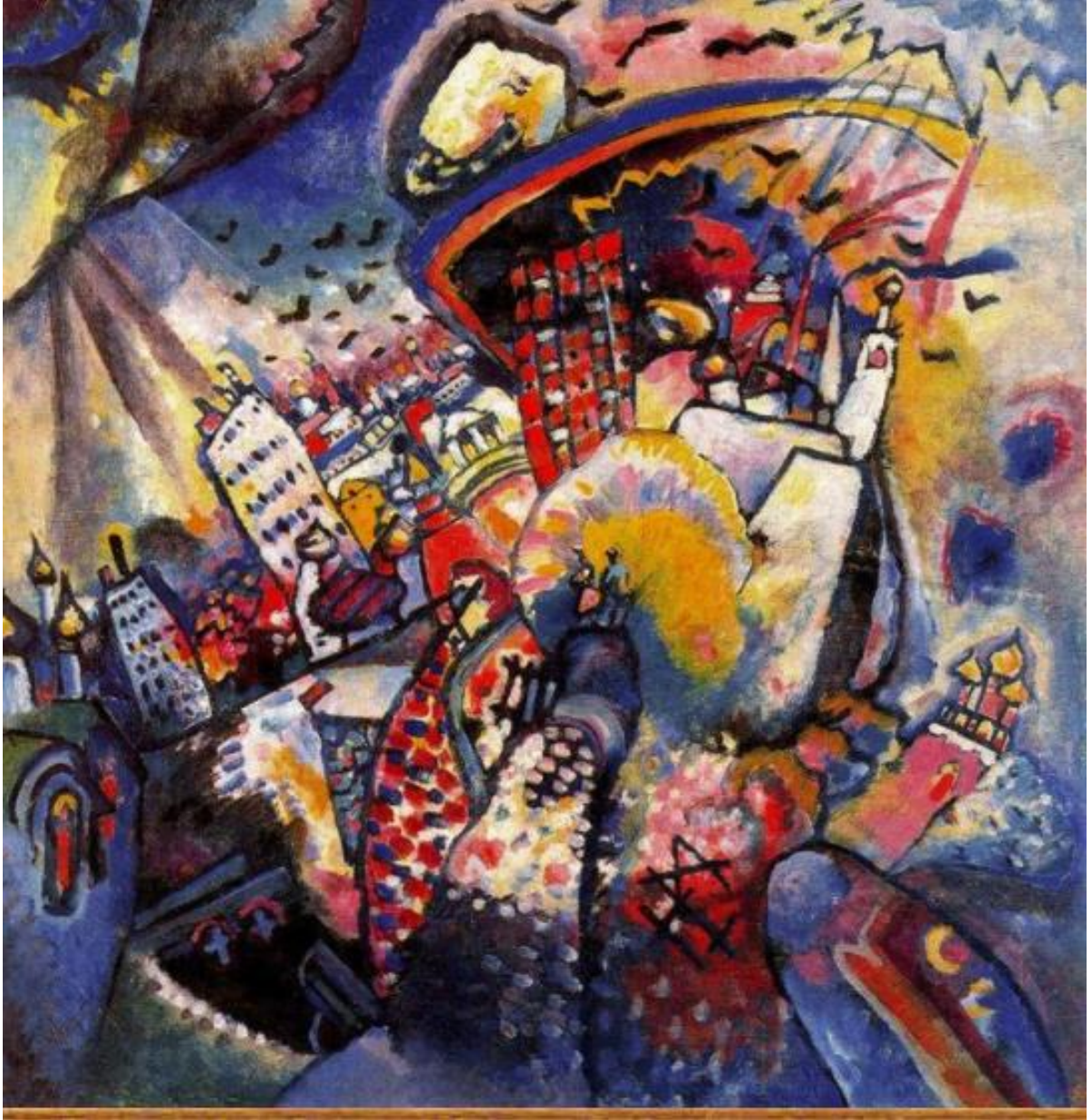


Moscou de Vassily Kandinsky



Moscou de Vassily Kandinsky




Diagram illustrating the process of identifying colors in the painting 'Moscou' by Vassily Kandinsky. The main painting is shown on the left. Three arrows point to three different elements:

- Top: A grayscale image of a pine tree in a snowy landscape, with a red arrow pointing to the tree and a color wheel below it.
- Middle: A grayscale image of a pine tree in a snowy landscape, with a red arrow pointing to the snow and a color wheel below it.
- Bottom: A large orange plus sign.

Each of these three elements is associated with a large empty rounded rectangular box on the right for notes.

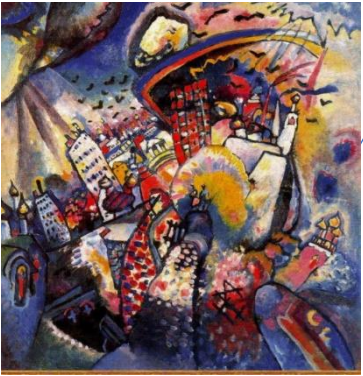


Diagram illustrating the process of identifying emotions in the painting 'Moscou' by Vassily Kandinsky. The main painting is shown on the left. Two arrows point to two different elements:

- Top: A collection of smiley face stickers on a blue background.
- Bottom: A vertical strip of text on a grid background with four lines: 'Jadore' (with three red hearts), 'J'aime' (with one red heart), 'Je n'aime pas' (with one broken red heart), and 'JE DÉTESTE' (with one broken red heart).

Each of these two elements is associated with a large empty rounded rectangular box on the right for notes. The bottom-most box contains a question mark '?'.